

DEPARTMENT OF FINE AND PERFORMING ARTS



# FPAC

FINE AND PERFORMING ARTS CENTER



# FPAC SPACE DETAILS AND CAPACITY INFORMATION

## —Recital Hall (Proscenium-style)

- 173 seats
- Not used primarily by theatre
- Designed and built for superb acoustics with no amplification
- Acoustically tunable with curtains
- Lighting instruments
  - All brand new Source 4 ellipsoidals (26°, 19°)
- Lighting positions
  - 1 batten on an automated winch over the audience
- Dimming
  - Strand C21 rack in dedicated room away from theatre
  - 30 dimmers for performance lighting
  - Strand Light Palette
  - Capability to use Strand Nodes to add DMX over ethernet onstage or on the batten
- Sound
  - Yamaha LS-9 digital board
  - Aviom equipment for XLR connection and run to amps
  - QSC amps and DSP, housed in dedicated room away from theatre
  - Speakers left and right, subwoofer under the stage center
  - 4 hardwired monitor outputs
  - Monitor capabilities to green room, dressing rooms, and scene shop
  - 8 Wireless handheld microphones, 8 wireless lavalier microphones, a large variety of cardioid, omni-directional, and unidirectional microphones.
  - CD Playback capabilities
- Projection
  - Christie Projector and motorized upstage screen
  - Controlled through a touch panel with programming for different input sources including: VGA in booth, VGA onstage, Blu-Ray in booth, DVD or VHS in booth, Blu-Ray backstage, DVD or VHS backstage
  - Touch panel controls screen and projector on/off, blank
  - Touch panel controls volume of all video sources and “teaching microphones”

## —MainStage Theater (Proscenium)

- 371 seats with the option to add two rows in place of the apron bringing the total to 400
- Designed and built for superb acoustics with no amplification
- Limited acoustic tunability with some curtains at the catwalk level
- Spiralift orchestra pit with: Stage Level, Orchestra level, and two rows of seats that can be rolled onto it
- Single purchase counter-weight fly rail with 30 lines on 8” centers
- Full walkable grid
- Fly tower is 1 1/2 times the proscenium height
- New soft goods including: Cyclorama, Black Sharktooth scrim, 10 legs, 8 panels, 5 borders, traveller.
- Lighting instruments
  - All brand new fixtures including: Source 4 Ellipsoidals (50°, 36°, 26°, 19°, 14°), Source 4 PARs, Selecon Fresnels (8”), L&E J-Reflectors, two Robert Juliet

Followspots, 8 booms and boom bases, 60 sidearms, spare lamps for all instruments, and ample cable

- Lighting positions
  - Two walkable catwalks
  - Lighting gallery over the stage boxes
  - Box booms with stair access
  - Balcony rail
  - Flexible electrics with socapex boxes on the mid-rail allowing for multi-cable to be run to any batten
- Dimming
  - Strand C21 rack in dedicated room away from theatre
  - 282 dimmers for performance lighting
  - Strand Light Palette VL
  - Capability to use Strand Nodes to add DMX over ethernet in catwalk, followspot booth, onstage, backstage, pit, galleries, balcony rail, house
- Sound
  - Yamaha LS-9 digital board
  - Aviom equipment for XLR connection and run to amps
  - QSC amps and DSP, housed in dedicated room away from theatre
  - Speakers left, right, and center, subwoofer in the catwalks, delay speakers under the balcony and in the box seats
  - 4 hardwired monitor outputs in pit
  - Monitor capabilities to green room, dressing rooms, and scene shop
  - Benefit of Aviom and A-Net means that moving the sound board to a house mix position is relatively easy
  - 2 Wireless handheld microphones, 8 wireless lavalier microphones, a large variety of cardioid, omni-directional, and unidirectional microphones.
  - CD Playback
- Projection
  - Christie Projector and motorized screen downstage of the proscenium
  - Controlled through a touch panel with programming for different input sources including: VGA in booth, VGA in pit, Blu-Ray in booth, DVD or VHS in booth, Blu-Ray backstage, DVD or VHS backstage
  - Touch panel controls screen and projector on/off, blank
  - Touch panel controls volume of all video sources and “teaching microphones”

— Movement Studio (Proscenium-style)

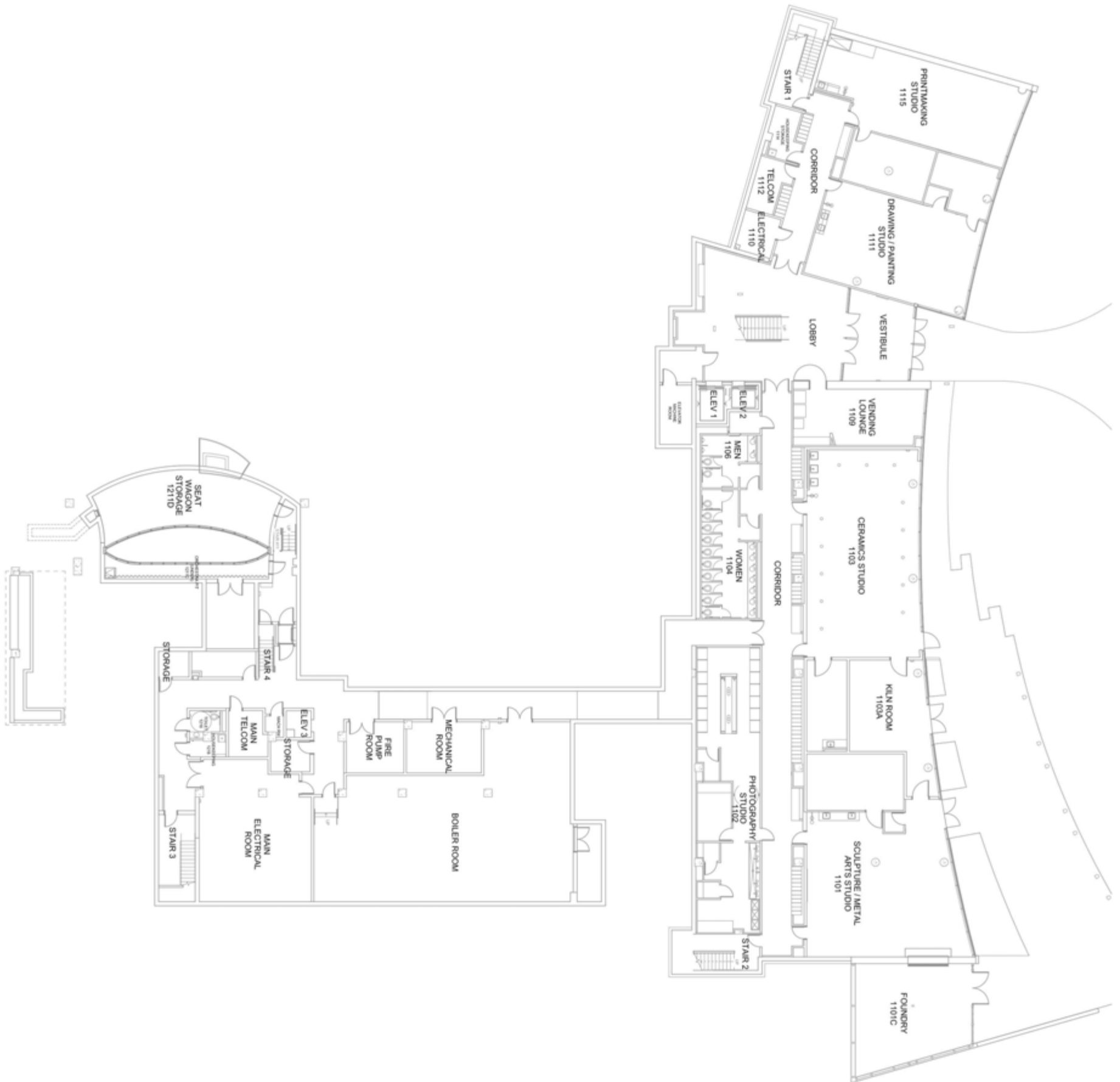
- 48 permanent seats, around 65 total possible
  - Seats can be folded against the wall
- Sprung dance floor
- 20' high dead-hung lighting grid (4'x4')
- New soft goods including: legs, cyclorama, scrim
- Mirrors on upstage wall and stage left wall
- Permanent barres on upstage wall and stage right wall
- Lighting instruments
  - All brand new fixtures including: Source 4 Ellipsoidals (50°, 36°), Source 4 PARs, L&E J-Reflectors, and cable
- Lighting positions
  - Dead hung lighting grid

- Dimming
  - Strand C21 rack in dedicated room away from theatre
  - 48 dimmers for performance lighting
  - Strand Palette
- Sound
  - Yamaha 01V96
  - 4 hard-wired XLR inputs upstage
  - QSC amps and DSP, housed in booth
  - Speakers left and right upstage
  - 2 Wireless handheld microphones, 4 wireless lavalier microphones.
  - CD Playback
- Projection
  - Christie Projector and motorized screen upstage
  - Controlled through a touch panel with programming for different input sources including: VGA in booth, VGA on stage left, VGA on stage right, Blu-Ray in booth, DVD or VHS in booth
  - Touch panel controls screen and projector on/off, blank
  - Touch panel controls volume of all video sources
- BlackBox Theater (Flexible Space: Thrust or Proscenium-style)
  - Approximately 200 seats available, can comfortably hold around 165
  - 20' high dead-hung lighting grid (4'x4')
  - New soft goods including: legs, cyclorama, scrim
  - Lighting instruments
    - All brand new fixtures including: Source 4 Ellipsoidals (50°, 36°, 26°), Source 4 PARs, Selecon Fresnels (6"), L&E J-Reflectors, and cable
  - Lighting positions
    - Dead hung lighting grid
  - Dimming
    - Strand C21 rack in dedicated room away from theatre
    - 180 dimmers for performance lighting
    - Strand Palette
  - Sound
    - Yamaha 01V96
    - 12 hard-wired XLR inputs around the stage
    - QSC amps and DSP, housed in dedicated room away from theatre
    - Speakers left and right upstage
    - 2 Wireless handheld microphones, 4 wireless lavalier microphones.
    - CD Playback
  - Projection
    - Christie Projector and manual screen
    - Controlled through a touch panel with programming for different input sources including: VGA in booth, VGA upstage center, VGA on stage right, Blu-Ray in booth, DVD or VHS in booth, DVD or VHS backstage
    - Touch panel controls screen and projector on/off, blank
    - Touch panel controls volume of all video sources

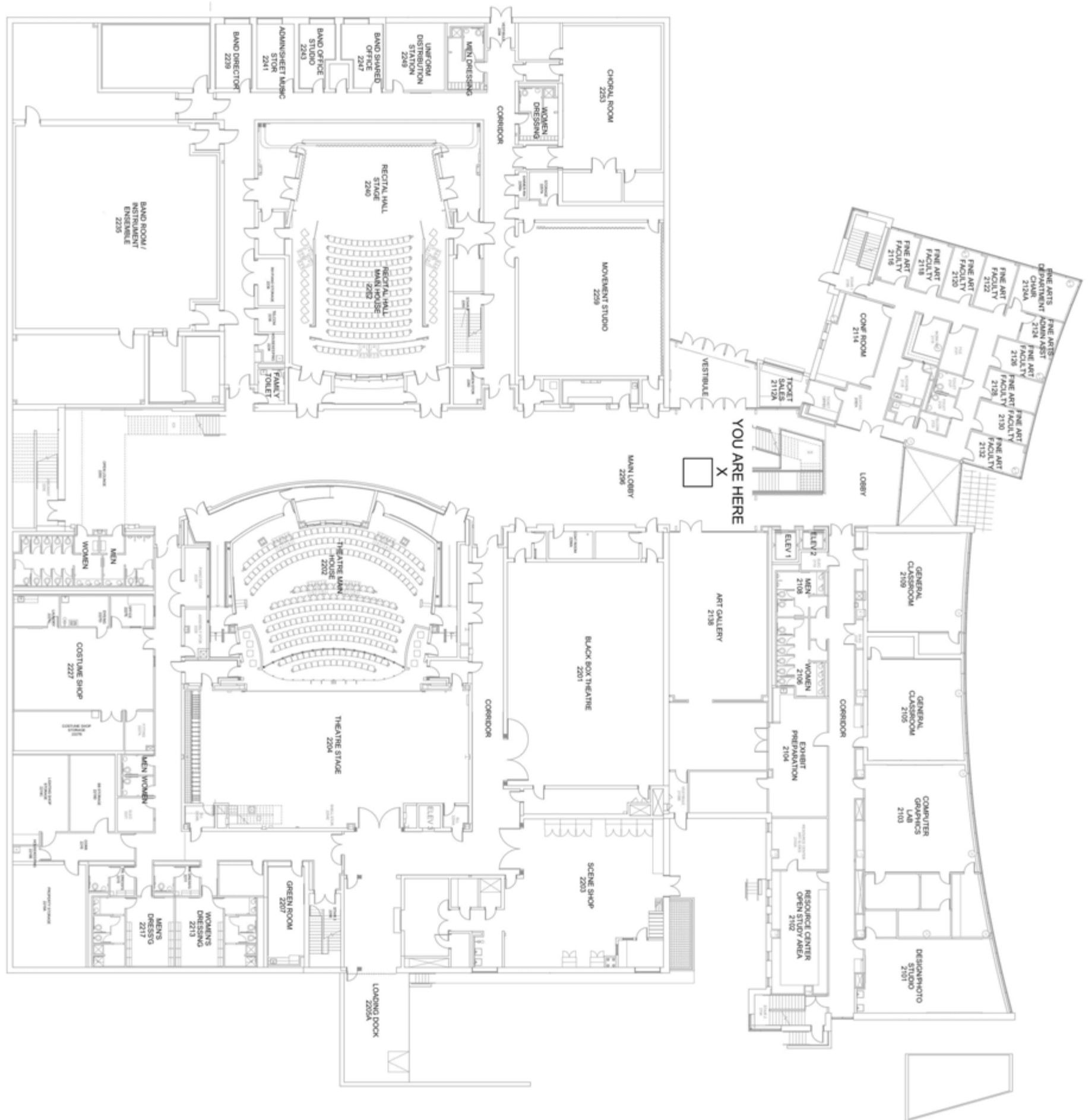
Dressing rooms, green room

- There is a Men's Dressing Room, a Women's Dressing Room, and two private dressing rooms

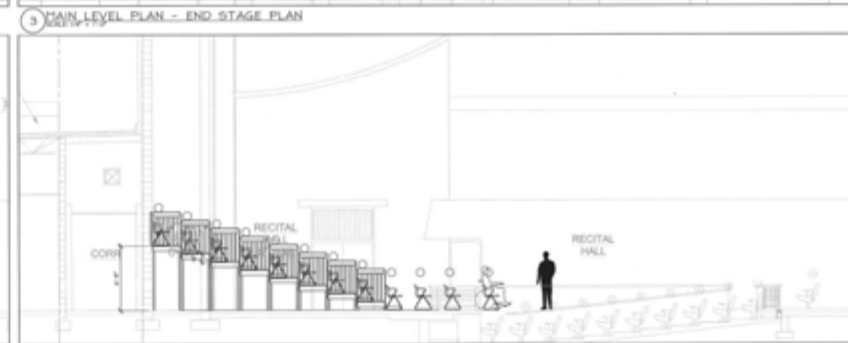
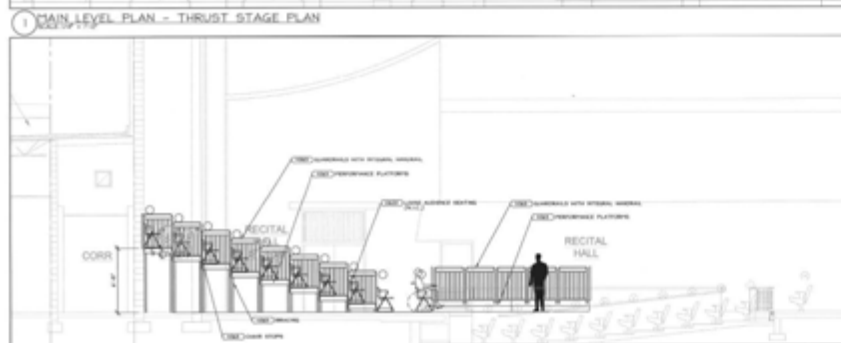
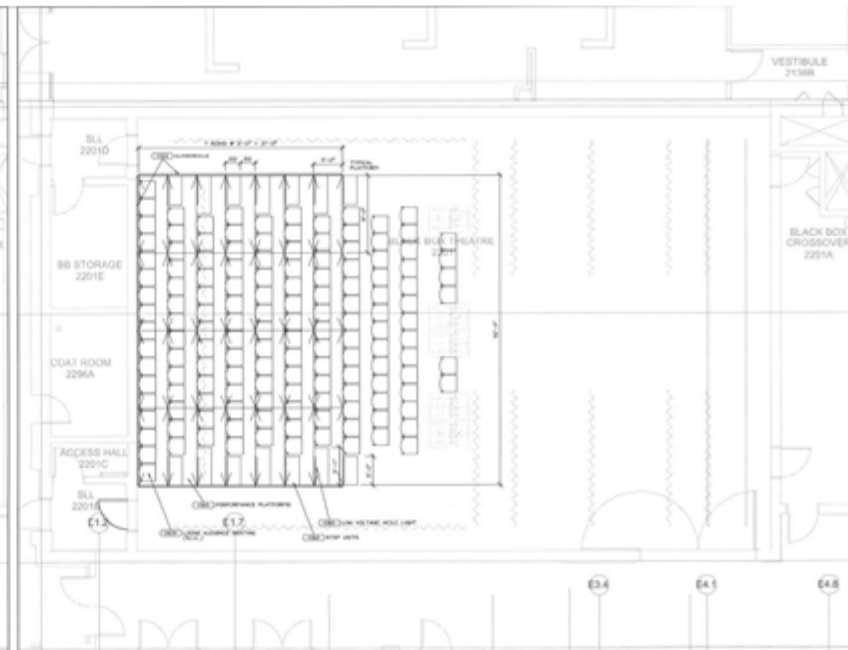
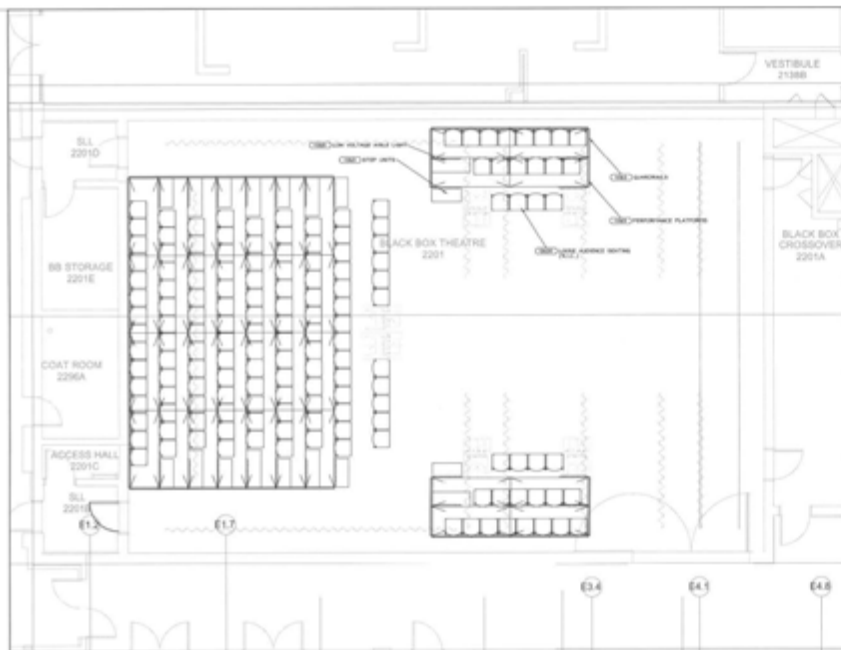
- Dressing room facilities are spacious, with showers (not in the private dressing rooms), lockers, mirrors, and make-up lights.
- Dressing rooms and green room have headset communication with both the MainStage Theater and the Recital Hall.
- Backstage audio monitors are in the dressing rooms and green room and can be used to listen to the MainStage Theater and the Recital Hall
- Green room has a sink, refrigerator, and microwave.



**FPAC - 1ST FLOOR (ART, DESIGN, SCULPTURE & PHOTOGRAPHY STUDIOS)**



**FPAC - 2ND FLOOR (PERFORMANCE SPACES, GALLERY, CLASSROOMS, OFFICES, COMPUTER LAB, STUDIOS, ETC.)**



5 SEATING AND PLATFORM INVENTORY

	SEATS	WHEELCHAIR	TOTAL
END STAGE	10	5	15
THRUST STAGE	10	6	16
PROSCENIUM			119
PLATFORM QUANTITY			
TOTAL	20	11	31

5'0" = 1'-0"

**EYP/**  
 Theatre Projects  
 Consultants

PROJECT NAME: FINE AND PERFORMING ARTS CENTER (FPAC)  
 PROJECT NUMBER: 05-179-648-00

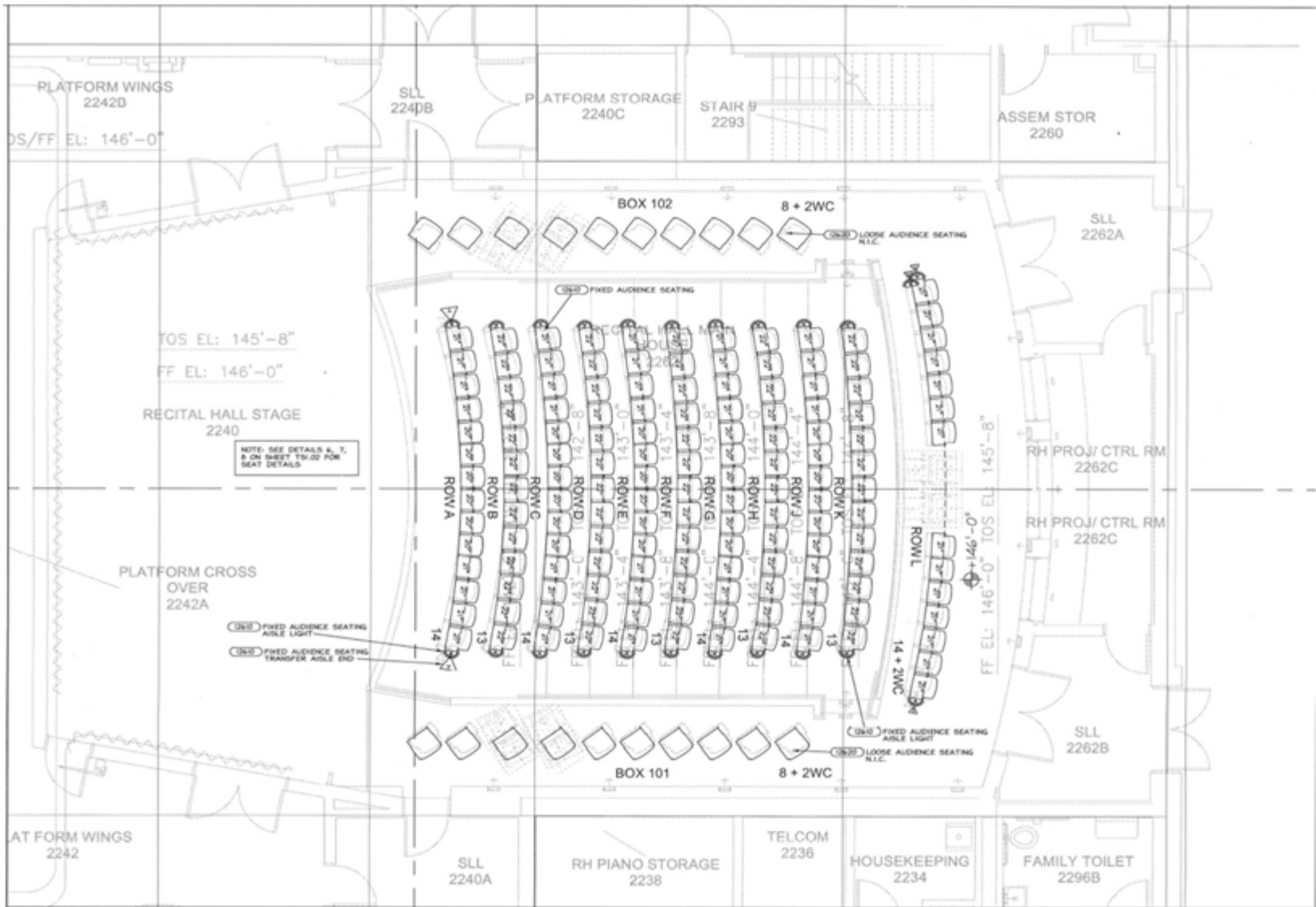
PROJECT NAME: FINE AND PERFORMING ARTS CENTER FOR BOWEN STATE UNIVERSITY  
 PROJECT NUMBER: ISSUED FOR CONSTRUCTION 1/24/20

PROJECT MANAGER: DATE: \_\_\_\_\_  
 REVIEWER: \_\_\_\_\_  
 MARK: DATE: \_\_\_\_\_  
 DESCRIPTION: THEATRE SEATING  
 DRAWN BY: \_\_\_\_\_  
 CHECKED BY: \_\_\_\_\_  
 DATE: \_\_\_\_\_  
 THEATRE SEATING  
 BLACK BOX THEATRE

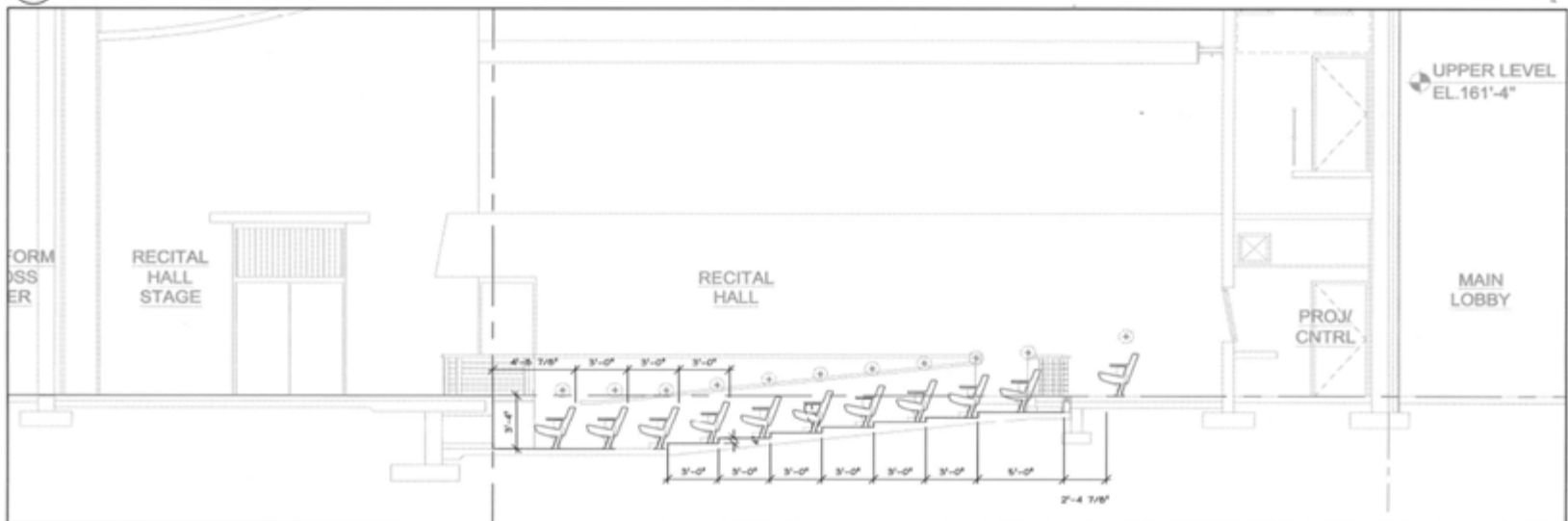
**TS2.01**

**FPAC - RECITAL HALL SEATING VIEW 1**

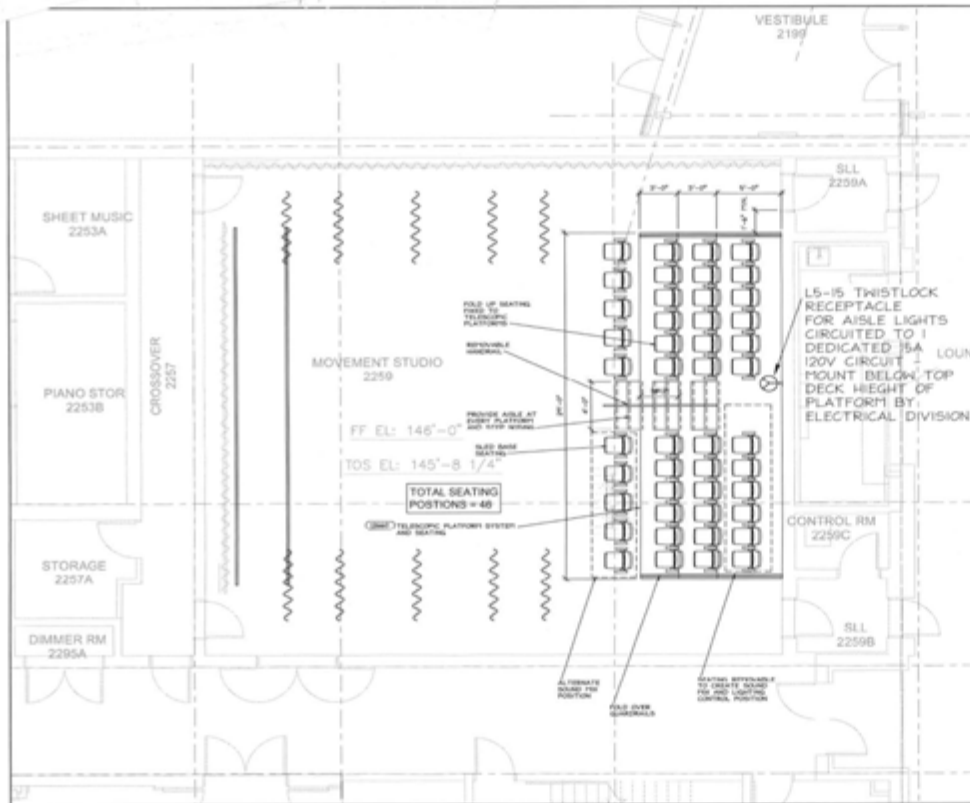




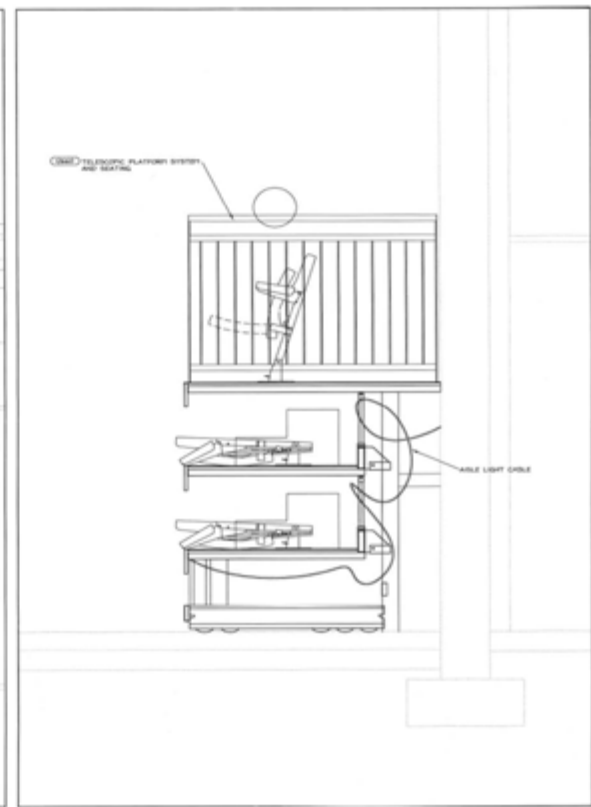
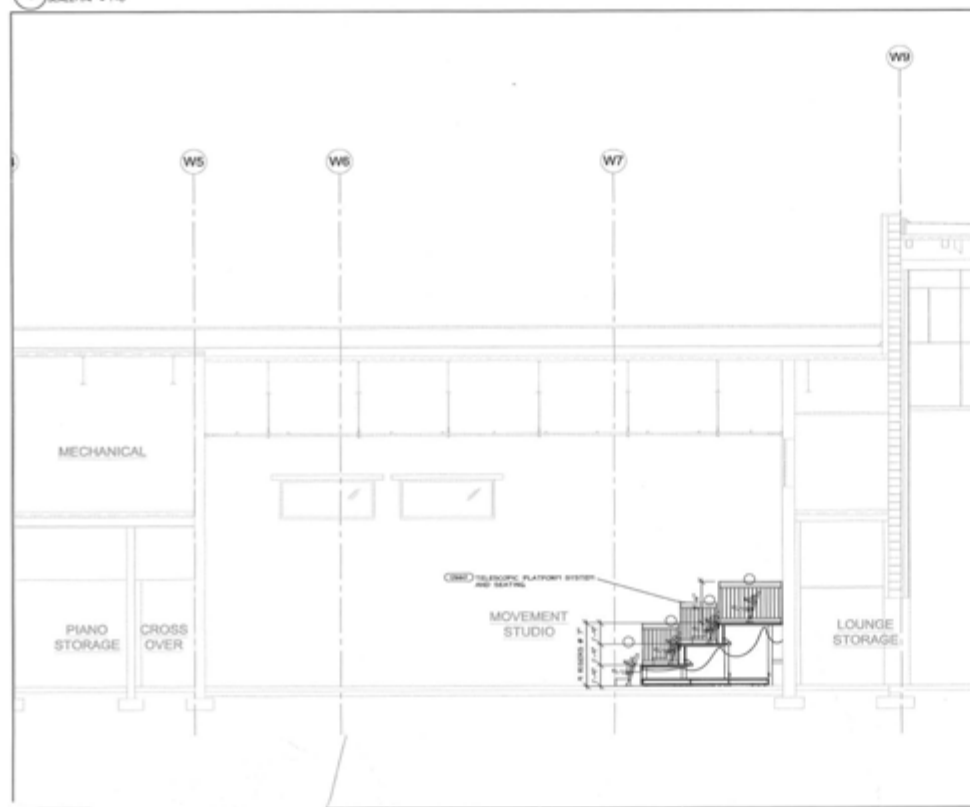
1 MAIN LEVEL PLAN  
SCALE: 1/4" = 1'-0"



FPAC - RECITAL HALL SEATING VIEW 2

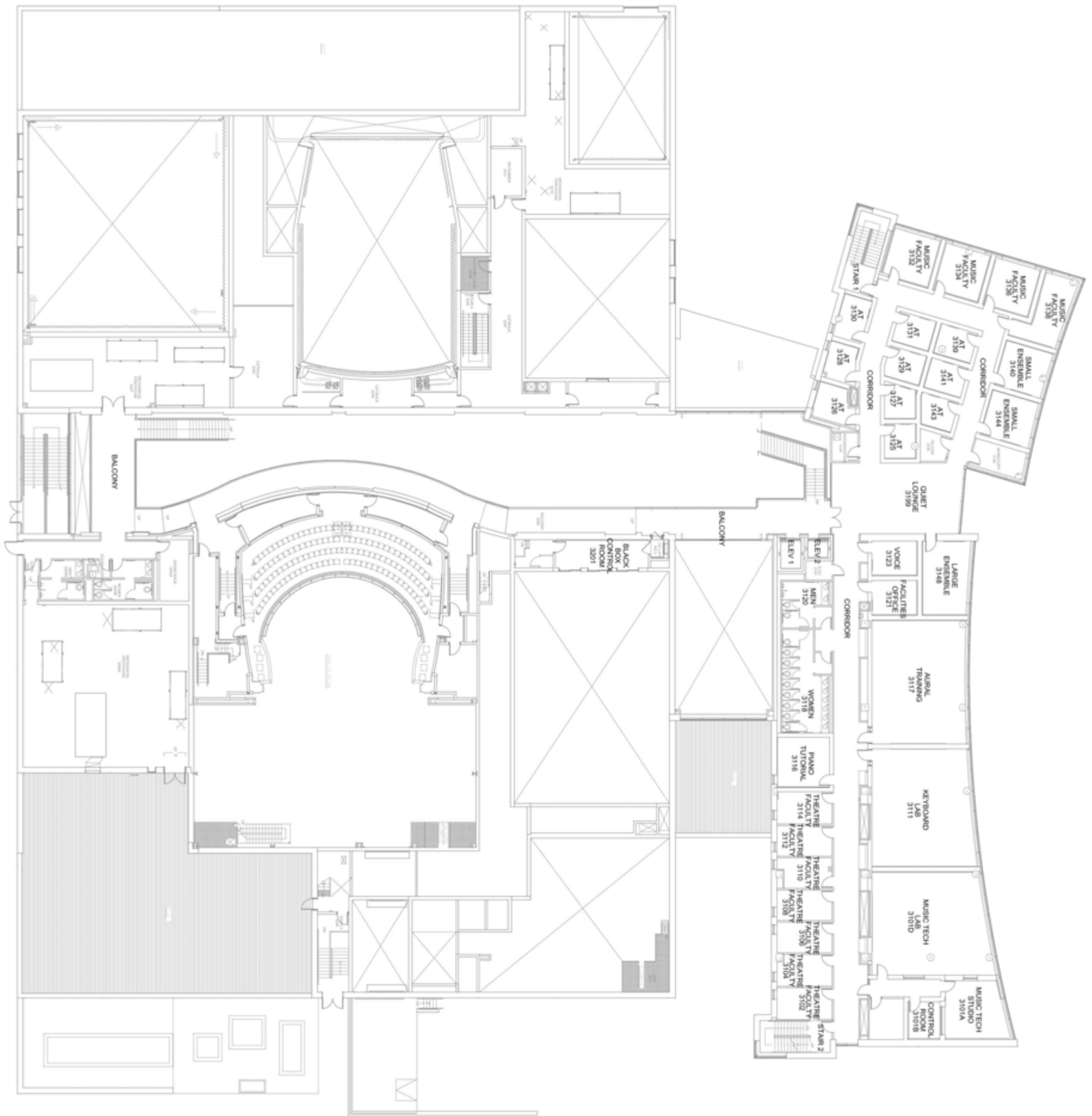


1 TELESCOPIC PLATFORM PLAN

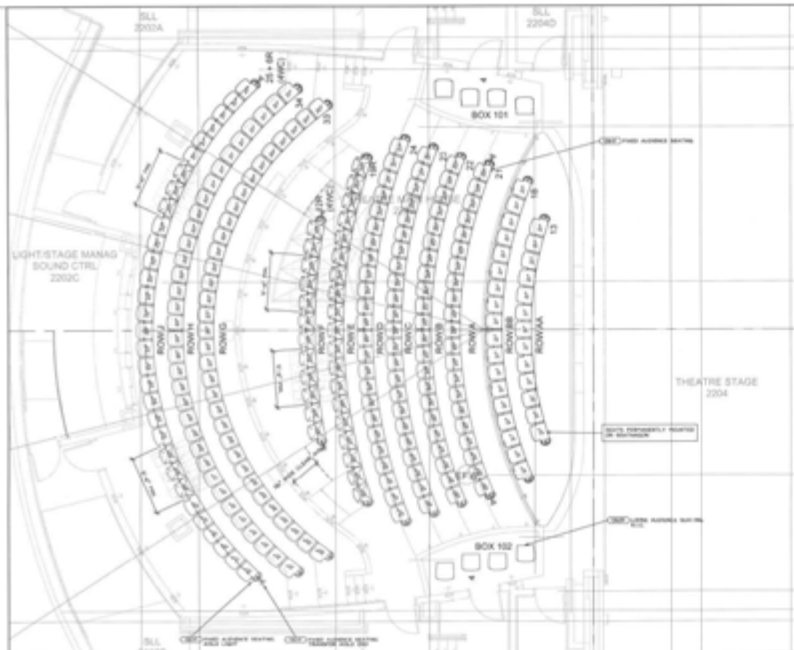


3 TELESCOPIC PLATFORM DETAIL SECTION

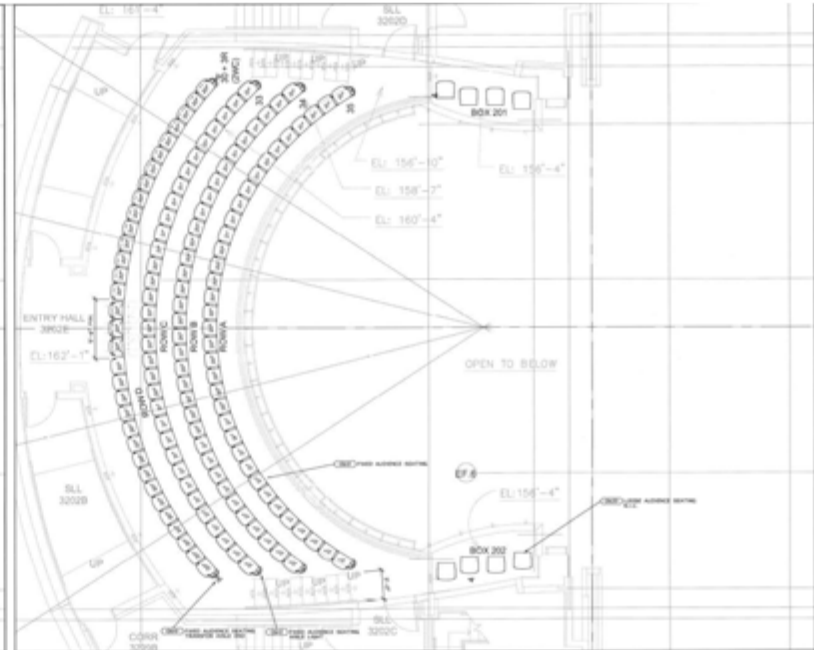
FPAC - MOVEMENT STUDIO SEATING



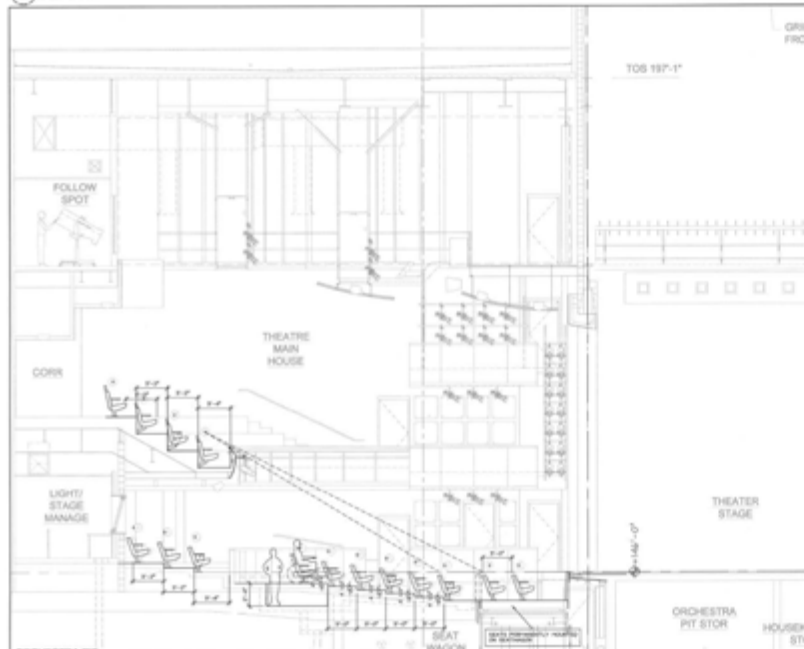
**FPAC - 3RD FLOOR, MAIN STAGE BALCONY, MUSIC RECORDING STUDIO, MUSIC TECH LAB, REHEARSAL ROOMS, CLASSROOMS, OFFICES**



1 MAIN LEVEL PLAN  
REV: 17/15



3 BALCONY LEVEL PLAN  
REV: 17/15



2 CENTERLINE SECTION  
REV: 17/15

SEATING AREA	SEAT	REMARKS	TOTAL SEAT AVAILABLE	LOOSE	TOTAL LOOSE	TOTAL SEAT - LOOSE	MARKED	TOTAL MARKED	SEAT CHANGE	TOTAL SEAT CHANGE	TOTAL WITH SEAT CHANGE
MAIN LEVEL											
BALCONY											
BOXES											
ORCHESTRA											
HOUSEKEEPING											
TOTAL											

4 SEAT INVENTORY  
REV: 17/15



5 DRAWING KEY  
REV: 17/15



**EYP/**  
ARCHITECTURE  
ENGINEERING & PLANNING P.C.  
1000 N. LAKE ST. SUITE 1000  
CHICAGO, IL 60607  
TEL: 312.462.3000  
WWW.EYP.COM

**THEATRE PROJECTS Consultants**  
1000 N. LAKE ST. SUITE 1000  
CHICAGO, IL 60607  
TEL: 312.462.3000  
WWW.EYP.COM

PROJECT NAME  
FINE AND PERFORMING ARTS CENTER (FPAC)  
STATE UNIVERSITY

PROJECT NUMBER  
05-173-046-00

PROJECT NUMBER  
DATE

NO.	DATE	DESCRIPTION	ISSUED BY	CHECKED BY

DESIGNED BY  
DRAWN BY: DKC  
CHECKED BY  
DATE OF PROJECT NO. 05/17/15  
THEATRE SEATING  
MAIN STAGE THEATRE PLANS

**TS1.01**

**FPAC - MAIN STAGE BALCONY SEATING**