

Hello/Hola/Salut from the Department of Language, Literature, & Cultural Studies!

Table of Contents:

- 1) Faculty Accomplishments
- 2) Spring 2023 Courses
- 3) Queer Studies Speakers: November 22
- 4) End-Of-Semester Celebration: December 13
- 5) BSU DEI Climate Survey
- 6) Drifters Fund
- 7) Sigma Tau Delta

1) FACULTY ACCOMPLISHMENTS



Dr. Monifa Love's poem "Traveling Shoes (For Voices & Drums) An Excerpt" was published in a special issue of *Persimmon Tree*. Her work is published alongside noted poets Alicia Ostriker and Tess Gallagher. You can access this special issue, entitled Women: Rights, Resistance, Resilience: <https://persimmontree.org/special-issue-2022/poetry/>

2) SPRING 2023 COURSES

It's time to start thinking about the Spring! Make an appointment with your Advisor so you can discuss your Spring Schedule.

ENGL 210: Introduction to English Grammar, TR 12:30-1:45, Dr. Basena, Hybrid

ENGL 211: World Literature, TR 5:00-6:15, Dr. Bates, Online Synchronous

ENGL 211: World Literature, 1st 8 Weeks, Dr. Sierra, Online Asynchronous for TLPD Students

ENGL 256: Creative Writing II: Poetry, TR 11:00-12:15, Prof. Glover, In Person

ENGL 257: Creative Writing II: Fiction, TR 12:30-1:45, Prof. Williamson, Hybrid

ENGL 261: Gender, Culture, & Identity, TR 12:30-1:45, Dr. Uddin, In Person

ENGL 266: Writing About Disability & Health, MWF 11:00-11:50, Dr. Evelyn, In Person

ENGL 283: Studies in Popular Songs & Artists, TR 3:30-4:45, Dr. McKoy, In Person

ENGL 302: British Literature II, MWF 2:00-2:50, Dr. Evelyn, Hybrid

ENGL 317: American Literature II, MWF 10:00-11:00, Prof. Johnson, In Person

ENGL 325: African American Literature II, TR 9:30-10:45, Dr. Thompson, Hybrid

ENGL 329: African American Short Story, TR 11:00-12:15, Dr. Thompson, Hybrid

ENGL 333: Graphic Novels, TR 11:00-12:15, Dr. Sierra, Hybrid

ENGL 337: Adolescent Literature, W 5:00-7:30, Dr. Gross, In Person

ENGL 360: Creative Writing III: Non-Fiction Prose, MWF 2:00-2:50, Dr. Love, In Person

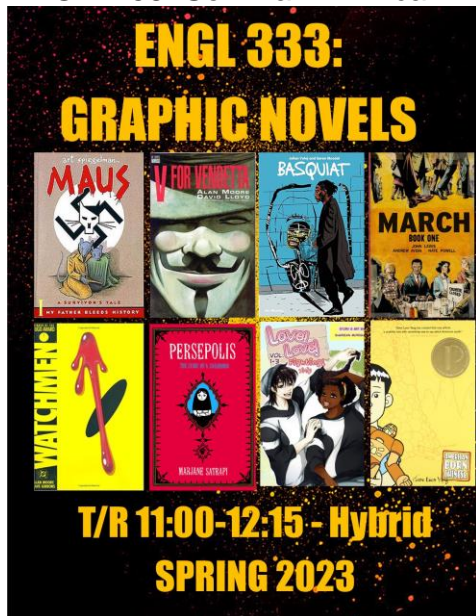
ENGL 370: Special Topics in Caribbean Literature, TR 1:00-1:50, Dr. Evelyn, In Person

ENGL 380: Identity & Social Media, TR 5:00-6:15, Dr. Uddin, In Person

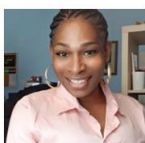
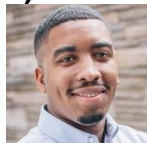
ENGL 408: Shakespeare & Film, MWF 10:00-10:50, Dr. Kaloustian, Hybrid

ENGL 437: History of Literary Criticism & Theory, MWF 12:00-12:50, Dr. Kaloustian, Hybrid

ENGL 438: Seminar for Majors & Minors, M 5:00-7:30, Dr. Kaloustian, Hybrid
 ENGL 445: Advanced Grammar, TR 2:00-3:15, Dr. Basena, In Person
 ENGL 455: Advanced Creative Writing I, TR 11:00-12:15, Prof. Williamson, Hybrid
 ENGL 456: Advanced Creative Writing II, TR 2:00-3:15, Prof. Glover, In Person
 ENGL 734: Seminar in Literature of the East, T 5:30-8:00, Prof. Glover, In Person
 ENGL 737: Literary Criticism & Theory, T 5:30-8:00, Dr. McKoy, In Person
 ENGL 763: Special Topics in Linguistics, R 5:30-8:00, Dr. Basena, In Person
 ENGL 758: Seminar in African Literature, W 5:00-7:30, Dr. Walker, In Person



3) QUEER STUDIES GUEST SPEAKERS: NOVEMBER 22



Dr. Horacio Sierra's ENGL 254: Queer Cultural Studies students will speak with two young LGBTQ professionals to discuss how they have relayed their studies into careers advancing LGBTQ issues.

Leslie Hall (BSU alumnus), Human Right Campaign's HBCU Director
 Celena Morisson, City of Philadelphia's Office of LGBT Affairs Director

All are welcome to join the Zoom Room on November 22 at 11:00
 am: <https://bowiestate.zoom.us/j/4090540458>

4) END-OF-SEMESTER CELEBRATION: DECEMBER 13

Join us in MLK 253 on Tuesday, December 13, at 12:30 pm as we celebrate the end of the semester. We will honor our Dean's List students and hand out Student Writing Awards. Lunch will be served.

5) RANGEL SUMMER ENRICHMENT PROGRAM



SUMMER ENRICHMENT PROGRAM

The Charles B. Rangel International Affairs Program offers a six-week summer enrichment program designed to provide undergraduate students with an appreciation of current issues and trends in international affairs, an understanding of career opportunities in the field, and higher knowledge and skills to pursue such careers. The Summer Enrichment Program encourages the application of students from minority groups historically underrepresented in the Foreign Service, women, and those with financial need in order to fulfill the Rangel Program mission – to enhance diversity in U.S. representation abroad.

What does it include? Two for-credit courses at Howard University for up to six credit hours, plus a seminar on professional writing. Scholars explore international careers by meeting public and private sector professionals and by visiting the Department of State, international organizations, and NGOs. The Program also discusses graduate school, scholarship and internship opportunities and helps students hone key professional skills.

The Rangel Program covers tuition, travel, room and board, and provides a \$3,300 stipend. Learn more here: <https://rangelprogram.org/summer-enrichment-program/>

6) BSU DEI CAMPUS CLIMATE SURVEY



BSU's Diversity, Equity, and Inclusion Committee asks all members of the BSU community to fill out a campus climate so that it can better advance diversity, equity, and inclusion in every area, including BSU's business processes, academic programs, community experiences and legacy planning. Click here to fill out the survey: <https://www.surveymonkey.com/r/DEICAMPUSCLIMATESURVEY>

8) DRIFTERS EMERGENCY STUDENT GRANT

The Drifters Emergency Student Grant is a \$10,000 grant awarded annually to degree-conferring institutions whose student enrollment is primarily comprised of students from underrepresented backgrounds. These grants have been given to numerous colleges and universities to help students to continue their studies. BSU was awarded the grant at The National Drifters, Inc. 63rd national Convention in August 2019. As a result, Juniors/Seniors in the Department of Language, Literature, & Cultural Studies experiencing an emergency need for tuition assistance, housing assistance, course materials, meal planning, or transportation assistance are eligible to apply. Please Contact Professor Lane (alane@bowiestate.edu) or Dr. Basena (dbasena@bowiestate.edu) for an application form.

9) SIGMA TAU DELTA

Sigma Tau Delta welcomes new members.

Membership Requirements:

- Candidates for undergraduate membership must have completed a minimum of two college courses in English language or literature beyond the usual requirements in freshman English. The candidate must have a minimum of a B or equivalent average in English and in general scholarship and must have completed at least three semesters or five quarters of college course work. Candidates for undergraduate membership need not be majoring or minoring in the discipline of English.
- Candidates for graduate membership who did not hold undergraduate membership must be enrolled in a graduate program in English or one of its specializations, have completed six semester hours of graduate work or the equivalent, and have a minimum grade point average of 3.3 on a 4.0 scale.
- Lifetime Membership Fee: \$80. \$40 goes to the Nu Nu chapter, which will bestow you with Honor Cords and a Medallion at your Induction Ceremony that you can wear during graduation. The other \$40 goes to Sigma Tau Delta's national office, which will supply you with your Sigma Tau Delta society pin and certificate. **LLCS can help pay for your membership fees.**

To learn more about Membership Benefits, please click here: <http://english.org/members/benefits.shtml>

If you are interested in becoming a member, please e-mail hsierra@bowiestate.edu

Newsletters are archived here: <https://bowiestate.edu/academics/colleges/college-of-arts-and-sciences/departments/language-literature-and-cultural-studies/newsletter.php>