



BOWIE STATE UNIVERSITY

*Fall 2024 Town Hall
Presidential Presentation*

October 3, 2024

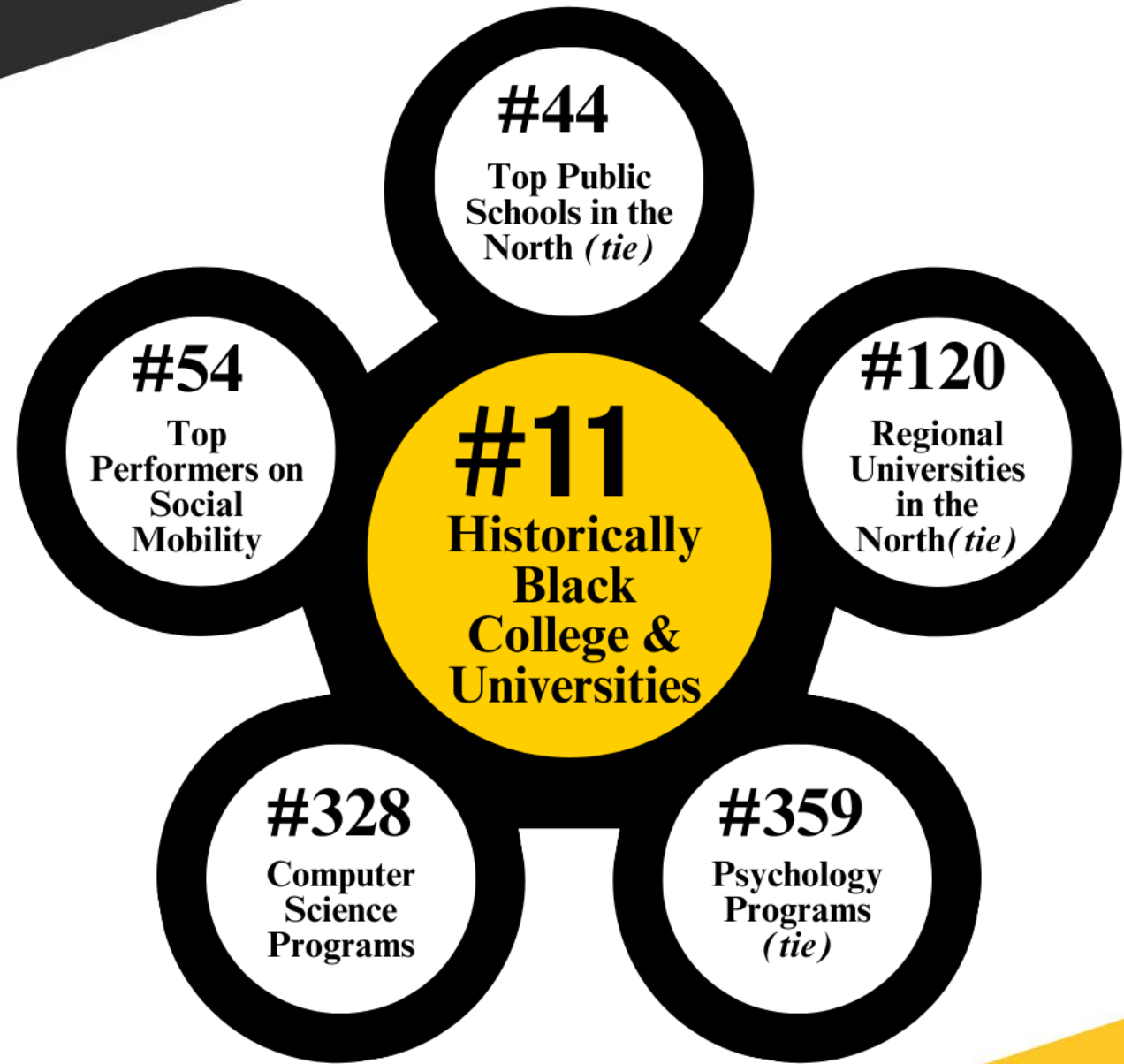
Aminta H. Breaux, Ph.D.

President





2024 *U.S. News & World Report* Rankings



Racing to Excellence

Academic Excellence



- Quality teaching, learning, and research
- High-demand, innovative academic programs
- High impact student activities
- Strategic partnerships

Student Success



- Promote access, affordability, and completion through resources and opportunities that empower students to succeed at every level of learning

Long-Term Viability of the Institution



- Attract a culturally diverse student body
- Actively engage alumni, friends, and partners to address critical needs
- Leverage fiscal resources to advance strategic priorities and create a sustainable future

Faculty Accomplishments



Number of Faculty

- 248 Full-time Faculty
- 312 Part-time Faculty



Grants & Awards

- **FY 2023**
\$19,918,763.74
- **FY 2024**
\$15,986,615.60



Books Published

- **FY 2023** 23 Books
- **FY 2024** 36 Books



Study Abroad Opportunities led by Faculty

Faculty-led Study Abroad Programs:

- African Diaspora & Congo Culture in Panama
- London, England
- Global Experience in Research in Undergraduates in Food Security in Kenya
- Interledger Summit in Costa Rica
- Global Fellowship Conference in Scotland
- Interledger Hackathon in South Africa

Fall 2020-2024 Student Enrollment



Academic Year	2020	2021	2022	2023	2024
Undergraduates	5,354	5,381	5,387	5,288	5,136
Graduate students	896	927	897	1,120	1,217
Total	6,250	6,308	6,275	6,408	6,353

Student Achievements



- The campus welcomed the 2024 SGA Leadership: Tierra Parker, President and Kayla Lowery, VP.
- Miguel Gasca Ortega was featured on News4 for being named BSU's first Latino drum major in the S.O.S Marching Band.
- The BSU Softball Team was honored by the Bowie Baysox Baseball Team for winning back-to-back championships.
- Mr. Bowie State, Chief Bentil, Jadyn Hewan, Anisa Watson and Quiana Willett joined with Harlem Fashion Row during New York Fashion Week.
- Enrollment in Bowie State's Prison to HBCU Pipeline Program is growing: 6 juniors, 9 sophomores, and 17 freshmen are now enrolled.

Student Support Services

Academic Advisement Center

Dir. Dr. Dorsha Goodman
Email: advisingbsu@bowiestate.edu

Career Development Center

Dir. Rosetta Price
Student Center,
Suite 3007

Henry Wise Wellness Center

Dir. Michele Richardson
Email: mfrichardson@bowiestate.edu

Military Resource Center

Dir. Andre Clayton
Thurgood Marshall Library,
Rm 1126

New Student Experiences & Student Engagement

Dir. Thomasina Boardley
tboardley@bowiestate.edu

Student Success Center Tutorial Services

Dir. Ebone Johnson
Thurgood Marshall Library,
Rm 1180

BSU Bold: *The Campaign for Excellence*

Campaign Results to Date

- Exceeded \$50M Goal in FY23
- Campaign ends December 2025
- Currently at \$65M, or 85% of our expanded \$75M Goal.

BSU Endowment

- 200+ endowed funds, up from 15 in 2017
- Currently value now exceeds \$44.8M, a 528% increase from \$7M in FY18

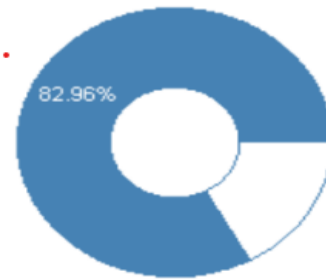
Significant Gifts This Fiscal Year

- \$1M from Adobe will support an innovative tech and training space in the Gateway building
- \$500K from the Maryland E-Innovation Fund to support the creation of an endowed Chair for Cybersecurity and Innovation
- \$75K from the acclaimed author James Patterson and his wife for scholarship aid

\$62,216,705

Goal
\$75,000,000

Remaining
\$12,783,295
17.04%



Capital Projects



**Rendering of the Gateway*

- **The Gateway**
 - 600+ Beds
 - 170,000 square feet
 - Restaurant/Retail
 - Innovation Hub
 - Groundbreaking Fall 2024
- **Thurgood Marshall Library and Academic Commons**
 - 185,000 GSF building
 - Existing building built 1977; 166,869 square foot
- **Public Safety Building (Request \$48.6M)**
 - Public safety is currently located in the McKeldin Gymnasium, built in 1957
 - 15,469 SF of the 21,142 GSF is associated with Athletics
 - Dedicated facility and technological resources to maximize efficiency and safety across our growing campus

Homecoming Update



Investment in Campus Safety

- Surveillance Camera System
- Enhanced Lighting Towers
- Increased Exterior and Interior Building Card Access
- 19 Blue Light Emergency Phones
- Metal Detectors
- Drones for surveillance
- Additional police/armed security
- Campus Perimeter Fencing
- ShotSpotter gunshot detection system
- Implementation of Artificial Intelligence (AI) Weapons Detection System
- Enhanced video surveillance
- Upgrades to door locking system
- License plate readers
- New No Smoking Policy prohibiting smoking on campus

You Need to Know: Homecoming Reminders

1

REGISTER FOR EVENTS

Registration allows us to provide important safety information and updates to attendees before, during and after Homecoming, and ensures that our campus doesn't exceed safe limits.

Deadline: 10/18

2

KEEPING YOU SAFE

This year, we will be hosting events earlier throughout the week so the campus community can conclude activities by **7 p.m.** on Homecoming Day, October 19.

3

GAME DAY TICKETS

Homecoming Football Game tickets and Homecoming Day registration **must be secured by no later than Friday, October 18. No football tickets will be available on game day.**

4

CARRY YOUR BULLDOG ID

All faculty, staff, and students are **required** to have their Bowie Bulldog ID Card while on campus.

1

There will be limited access to campus buildings.

2

Parking along Rt. 197 is prohibited.

3

Satellite parking will be provided in nearby public parking venues with shuttle service.

For more information:

<https://www.bowiestate.edu/alumni/university-signature-events/homecoming/>





The Future Belongs to the Bold *Racing to Excellence*

Town Hall Fall 2024

Bowie State University

Guy-Alain Amoussou, Ph.D.

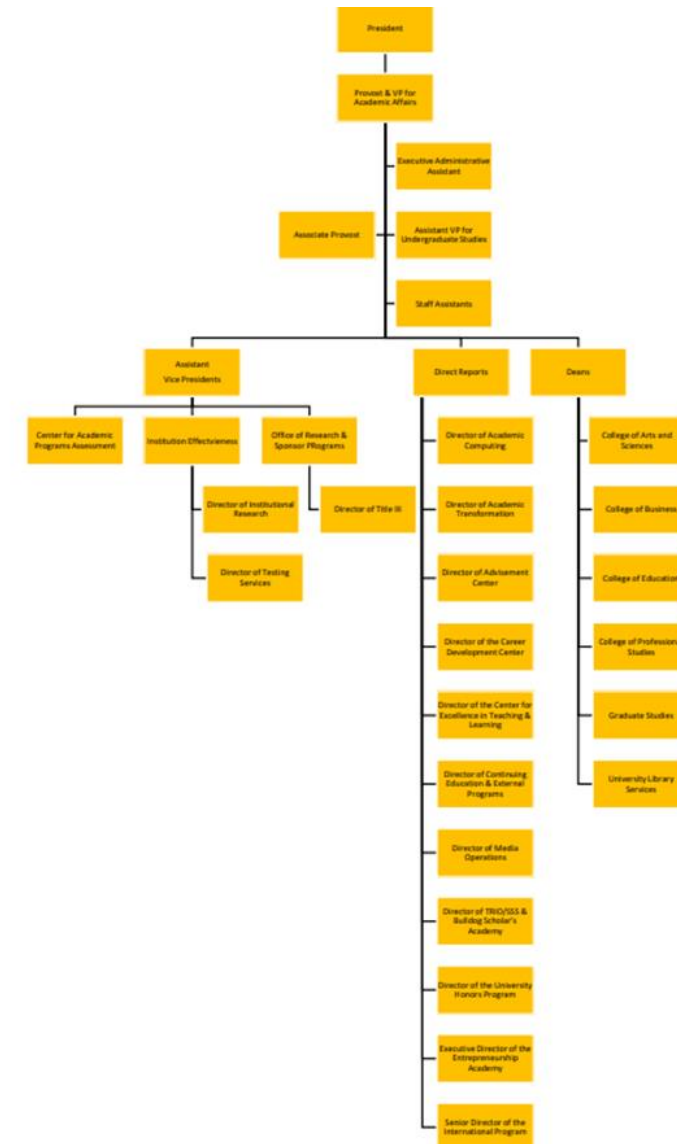
Provost & Vice President For Academic Affairs

October 3, 2024

Thank You!

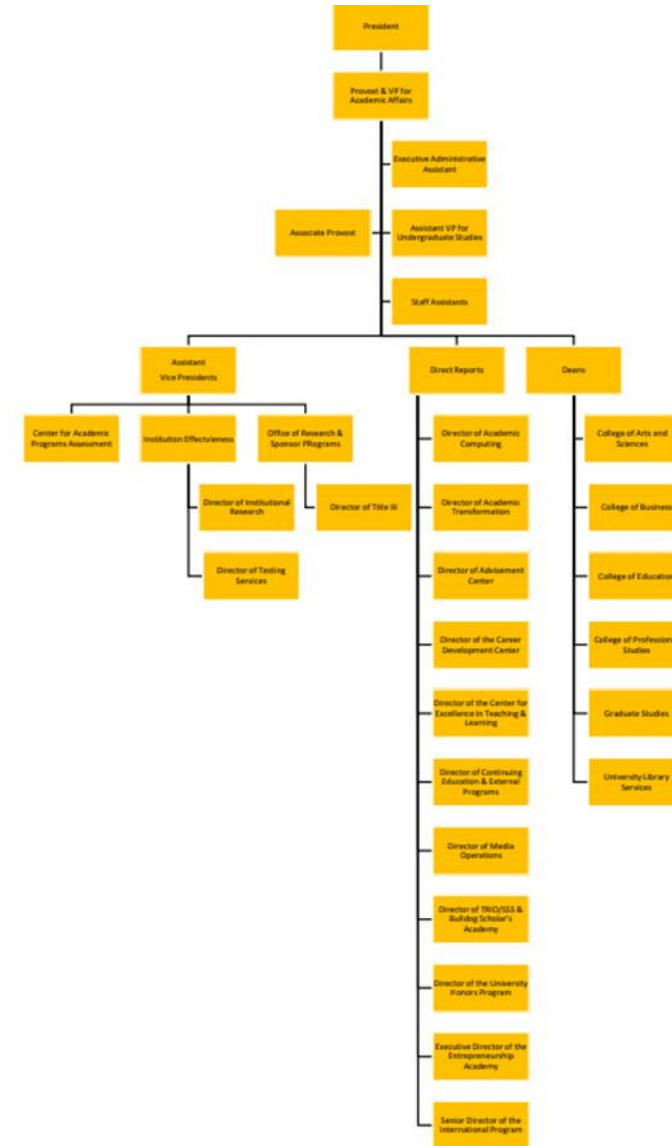
Academic Affairs Division

- Four Academic Colleges
 - College of Arts and Sciences
 - College of Professional Studies
 - College of Business
 - College of Education
- Graduate School
- Library Services



Academic Affairs Division

- Thirteen Non-Academic Offices
 - Academic Advisement Center
 - Student Success Center
 - Disability Support Services
 - Career Services
 - Entrepreneurship Innovation Center
 - Engaged learning & Student Support



Student Success & Retention

- Faculty & Department Support
 - Syllabus
 - Attendance
 - Office hours
 - Assignments & Grades
 - Midterm
 - Grade appeal process
 - Incomplete grade



Student Success & Retention

- Academic Support Services
 - Writing Center
 - Math Lab
 - Student Success Center (Tutoring)
 - Disability Support Services
 - Retention Coordinators & Advisors



<https://www.bowiestate.edu/academics/support-services/student-success-center/index.php>

Stay on Track & Graduate in Four Years



- Success Fest – Oct. 30, 10 a.m. – 2 p.m., Student Center Ballroom
- Meet with academic colleges and support services.

Midterms & Faculty Support

- Midterm Evaluations
 - **October 14 - October 18**
- Faculty are required to host virtual or in-person office hours.
- Faculty are responsible for submitting grades on time.



Stay on Track & Graduate in Four Years

Spring Advising & Registration




- **Advising: Monday, October 28 – Wednesday, December 9**
- Review your Academic Advising Report (AAR)
- Register for classes early
- Visit your department advisor or the Academic Advising Center and schedule an appointment

Celebration of Excellence

Spring 2024 Dean's List Tailgate Celebration October, 26

- 995 students earned their place on the Spring 2024 Dean's List
- Tailgate - 11 a.m. – 12: 30 p.m.
- Game – 1: 00 p.m. BSU vs Virginia Union University
- RSVP



BOWIE
STATE UNIVERSITY
1865

**CELEBRATION
OF ACADEMIC
EXCELLENCE**


Spring '24 Dean's List

Tailgate with us and celebrate the students
who earned a place on the Dean's list

SATURDAY, OCTOBER, 26, 11 A.M. - 1 P.M.
GAME TIME 1:00 P.M. VS. VIRGINIA UNION UNIVERSITY

HALF-TIME RECOGNITION DURING THE FOOTBALL GAME.
ONE FREE GAME TICKETS AVAILABLE FOR ALL HONOREES.

Dean's List Honorees RSVP:



Thank You & Let's Finish the Semester Strong!



Trends in Retention & Graduation Rates

Bowie State University
Trends in Retention and Graduation Rates
First-time, Full-time, Degree-Seeking Students

Cohort Year	Cohort Size	Retention Rates			Graduation Rates		
		2nd Yr	3rd Yr	4th Yr	4-year	5-year	6-year
2005	923	71%	56%	45%	22%	35%	41%
2006	765	71%	54%	49%	11%	27%	35%
2007	820	69%	57%	47%	13%	27%	35%
2008	664	69%	54%	47%	8%	26%	33%
2009	635	71%	59%	53%	11%	31%	41%
2010	608	75%	57%	49%	12%	27%	37%
2011	573	71%	57%	53%	15%	35%	40%
2012	477	70%	61%	54%	16%	36%	42%
2013	625	75%	59%	56%	16%	37%	43%
2014	594	72%	60%	55%	17%	36%	43%
2015	559	76%	59%	55%	17%	37%	42%
2016	958	72%	58%	51%	18%	35%	40%
2017	1075	68%	55%	50%	15%	31%	38%
2018	898	70%	59%	52%	16%	33%	38%
2019	801	76%	61%	53%	19%	32%	
2020	957	72%	54%	46%	15%		
2021	888	73%	56%	48%			
2022	1170	70%	54%				
2023	965	68%					

Source: EIS and DIS

Oct-24

Enrollment Management & Student Affairs Update

- Financial Aid Reversal Project “The Glitch”
- Student Accounts Billing Project
- Financial Aid Refund Process
- Free Application for Federal Student Aid (FAFSA)
 - *Release Date for 2025-2026 is December 1, 2024*



DoIT Update

Maurice Tyler, Vice President of Information Technology and
Chief Information Officer

Town Hall – 10.03.2024



eSports Arena

BeSports Update

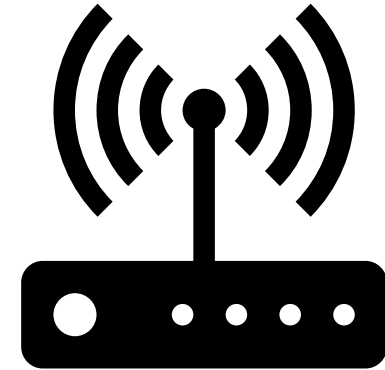
- PHASE I: IDENTIFY SPACE (COMPLETE)
- PHASE II: ARENA DESIGN (COMPLETE)
- PHASE III: ARENA CONSTRUCTION (COMPLETE)
- PHASE IV: ARENA CONFIGURATION (IN-PROCESS)
- PHASE V: RECRUITING (IN-PROCESS)
 - ACCEPTING CASUAL GAMERS AND ESPORTS ATHLETES
- PHASE VI: COMPETITIONS (IN-PROCESS)

Join New Blerd Order!

<https://bowiestate.info/esports>

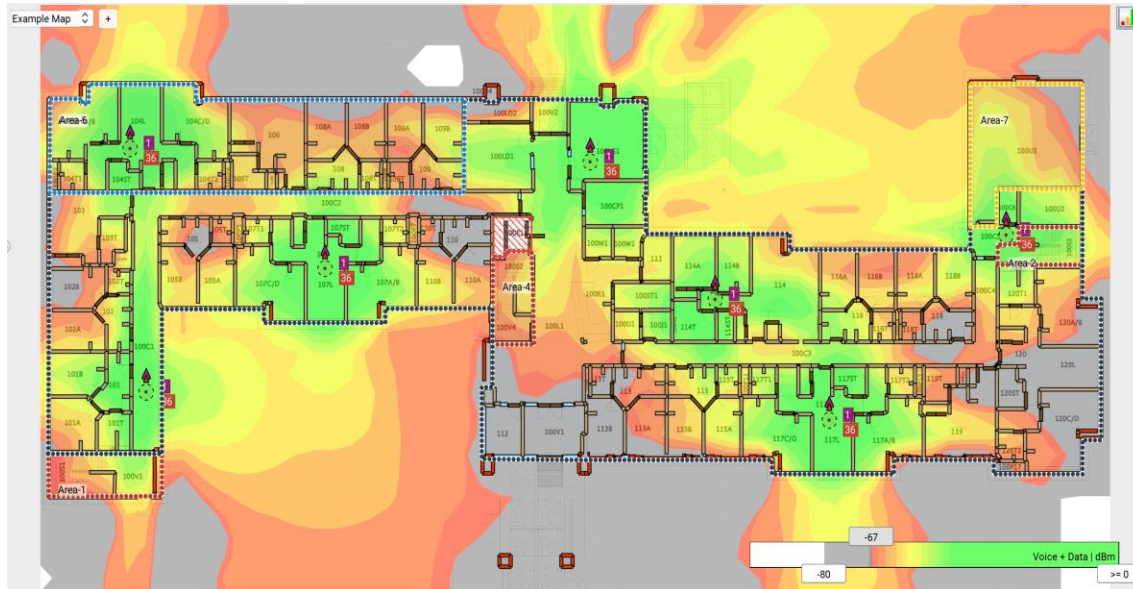


Campus Wireless Network



Campus Wi-Fi Update

- PERFORMED CAMPUS-WIDE SITE SURVEY
- DISCOVERED ROGUE ROUTERS AND DEVICE INTERFERENCE
- REMEDIATION PLAN STARTED (3-MONTHS)
- NEW SELF-SERVICE WI-FI REGISTRATION PROCESS
- CONTACT IT SERVICE DESK TO REPORT OUTAGES



Student Laptop Initiative

- DISTRIBUTED OVER 4,500 DEVICES
- TWO AVAILABLE CONFIGURATIONS:
 - APPLE 10.9" IPAD AIR WI-FI+CELLULAR 64GB - SPACE GRAY W/KEYBOARD AND FOLIO CASE
 - MICROSOFT SURFACE GO 2 - 10.5" - CORE M3 8100Y - 8 GB RAM - 256 GB SSD W/GO TYPE COVER KEYBOARD/TRACKPAD
- FOR INCOMING FRESHMEN
- OTHERS WITH TECHNOLOGY INSECURITIES MAY CONTACT THE IT SERVICE DESK



FOOD DELIVERY ROBOTS

Food Delivery Robots

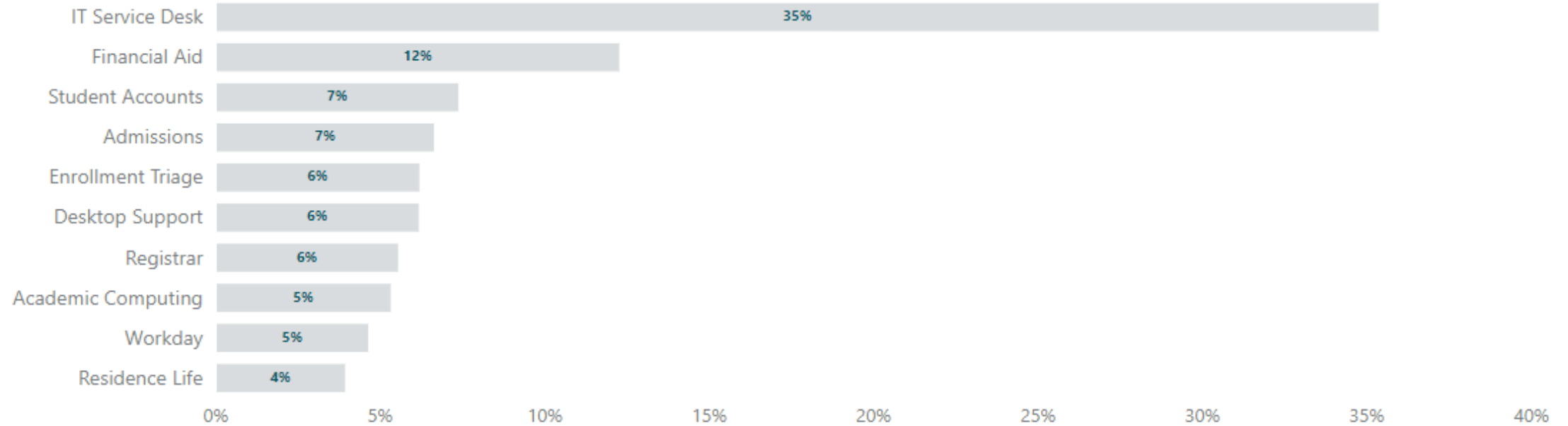
- WORKS IN RAIN, SLEET, SNOW OR SHINE
- DELIVERY TO ALL BUILDINGS ON CAMPUS (EXCEPT FOR FACILITIES)
- ORDERING IS AS EASY AS 1-2-3
 - 1: DOWNLOAD BULLDOG STARSHIP APP
 - 2: SECURELY PLACE AND PAY FOR YOUR ORDER
 - 3: USE APP TO ACCEPT YOUR DELIVERY





Faculty/Student Technology Resource Center

Tickets by selected attribute (top 10)



DoIT Service Desk Ticket Distribution

DoIT Service Desk Ticket Distribution



Transportation Automation

<https://qr.codes/POFcGd>



BSU GO!

Access:

- Individual Routes
- Schedules

View:

- Real-time Arrivals
- Shuttle Bus Locations

Set:

- Arrival Alerts
- Tag Favorites
- Alerts For Route Changes & Delays

Download the app
FREE!



If you have any questions,
contact the DoIT Service Desk
helpdesk@bowiestate.edu

Grammarly



<https://qr.link/Y9asR0>

DoIT DIVISION of INFORMATION TECHNOLOGY 

Grammarly makes writing easy

FREE to the BSU Community

- AI-powered grammar/spell checker
- Real-time feedback
- Customize your style, tone, & context-specific language
- See access link below

Use Grammarly to **rite** with **Excellence**

SPELLING
rite → write

The word **rite** doesn't seem to fit this context. Consider replacing it with a different one.

[Learn more](#)

Questions?
Contact the DoIT Service Desk
helpdesk@bowiestate.edu

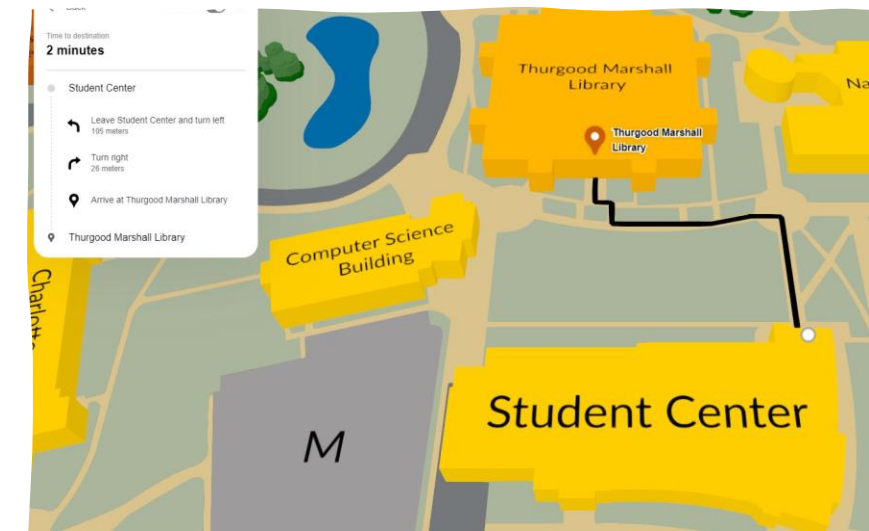
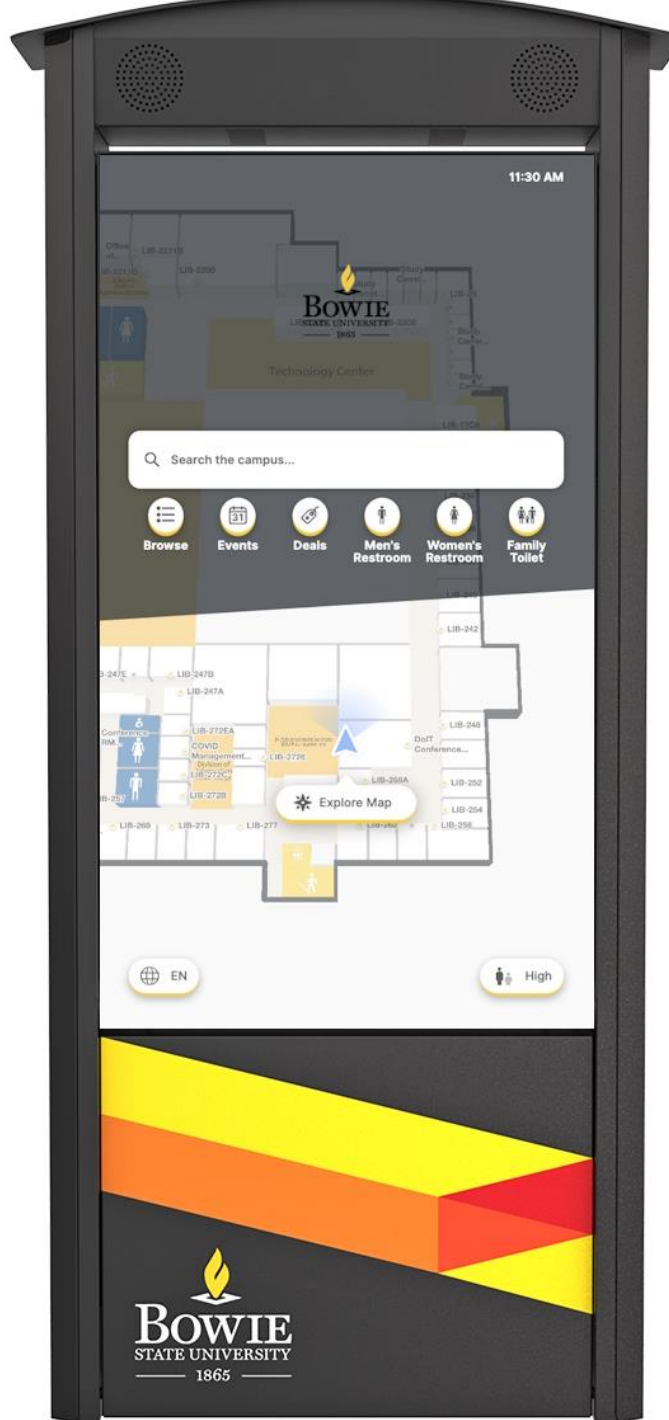


Faculty Office Suite



Charging Stations

Wayfinding Kiosks



Self-Service Printing

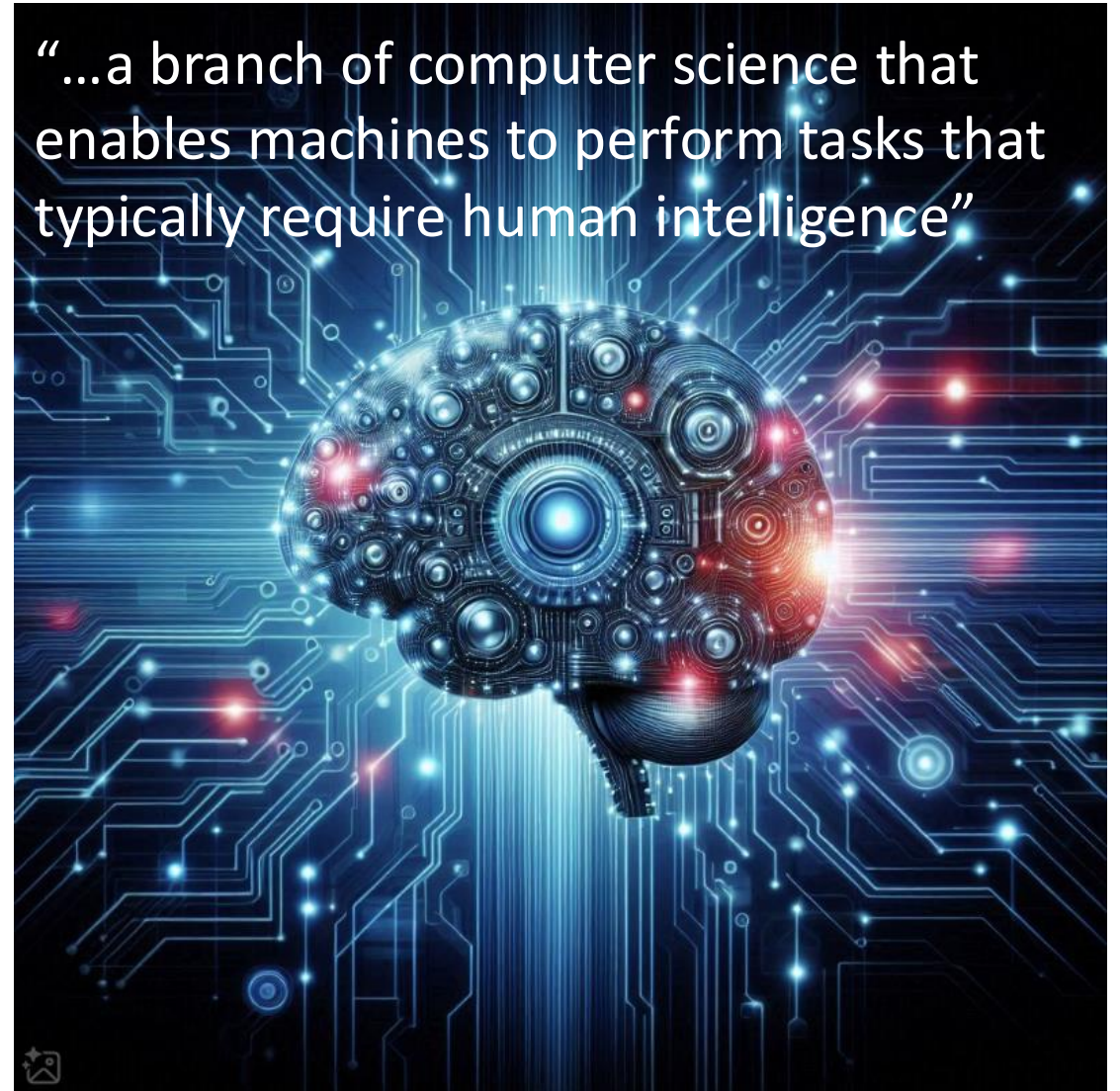


Self-Service Printer Installation Portal

Reduce help desk calls and empower end users to find and install printers with a single click.

Artificial Intelligence (AI) @BSU

- 86% OF COLLEGE STUDENTS USE AI
- GUIDING PRINCIPLES:
 - DO NO HARM, PRIORITIZE INTEGRITY, AUGMENT HUMANS, EMPOWER STUDENTS, COLLABORATE, ADAPT
- DIGITAL TRUST GUIDELINES
 - BE GOOD STEWARDS OF UNIVERSITY DATA
- BSU AI ADVANCES:
 - TURNITIN, TRAINING, NETWORK SECURITY, GRAMMARLY, CHAT BOTS, OFFICE365, ZOOM/TEAMS, ASTRA, VIRTUAL REALITY, BLACKBOARD, ADOBE, VIDEO SURVEILLANCE AND SECURITY



How to Spot a PHISH

What is Phishing? A fraudulent attempt to steal sensitive information (i.e. usernames, passwords, credit card numbers, etc.) via e-mail

How can I tell if a message is fake?

From: President; Helpdesk; tech@gmail.co ← 1 Authoritative sender; Foreign address
Date: February 29, 2018
To: Jane
Subject: URGENT ← 2 Abnormal sense of urgency/scare tactics

Attachments – Policy.pdf
Reset.zip ← 3 Odd attachments with .zip or .exe in the name
Help.exe

Jane,

You account password has expired. Please [click here](#) to reset your password immediately or your account will be deleted. ← 4 External links to login pages

The Help desk. ← 5 Grammatical errors

← 6 Involves providing private info or money